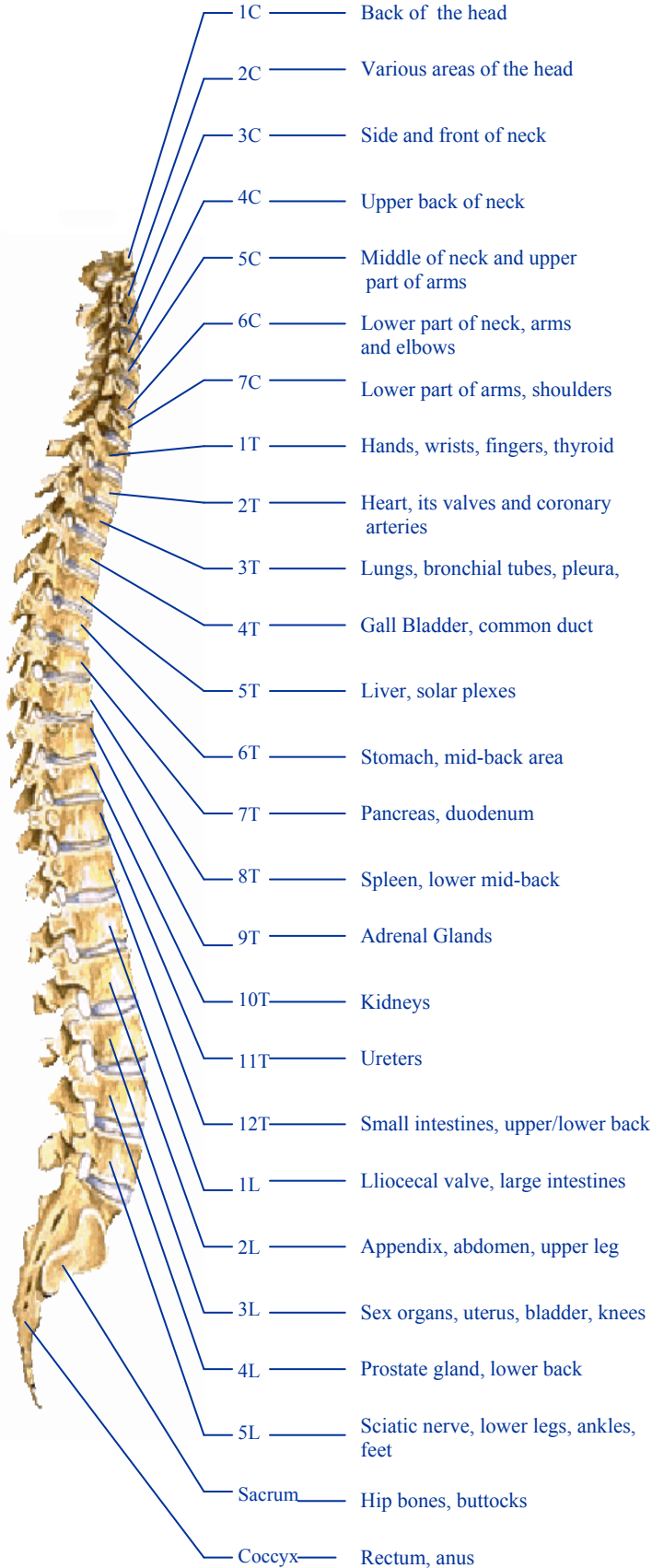


Spinal Level

Possible Symptoms



Headaches, nervousness, insomnia, head colds, high blood pressure, migraine headaches, mental conditions, nervous breakdowns, amnesia, epilepsy, chronic tiredness, dizziness.

Sinus troubles, allergies, crossed eyes, deafness, eye troubles, earaches, faint spells, certain cases of blindness.

Neuralgia, neuritis, acne pimples, eczema

Hay fever, rose fever, etc., hard of hearing, adenoid infections, post nasal drip.

Laryngitis, hoarseness, throat conditions like a sore throat, etc.

Stiff neck, pain in upper arm, tonsillitis, whooping cough, croup.

Colds, thyroid conditions, goiter, tennis elbow, tendonitis.

Asthma, cough, difficult breathing, shortness of breath, pain in lower arms and hands, symptoms similar to carpal tunnel.

Functional heart conditions and certain chest pains.

Bronchitis, pleurisy, pneumonia, congestion, influenza, grip.

Gall bladder conditions, jaundice, shingles.

Liver conditions, fevers, low blood pressure, anemia, arthritis.

Stomach troubles, indigestion, heartburn, dyspepsia.

Diabetes, ulcers, gastritis, hypoglycemia.

Lowered resistance, acute and chronic infections, hiccoughs.

Allergies, hives, hypertension, anemia, hypoglycemia, obesity.

Kidney troubles, hardening of the arteries, chronic tiredness.

Skin conditioning